



# Steep Hill DC

info@dc.steepphill.com

**Customer:** Ther-a-peu-tics

**Item name:** White Choc. Pomegranate Vanilla Bean 120 mg

**SHL ID:** 3191913

**sample type:** n/a

**instrument:** HPLC-DAD

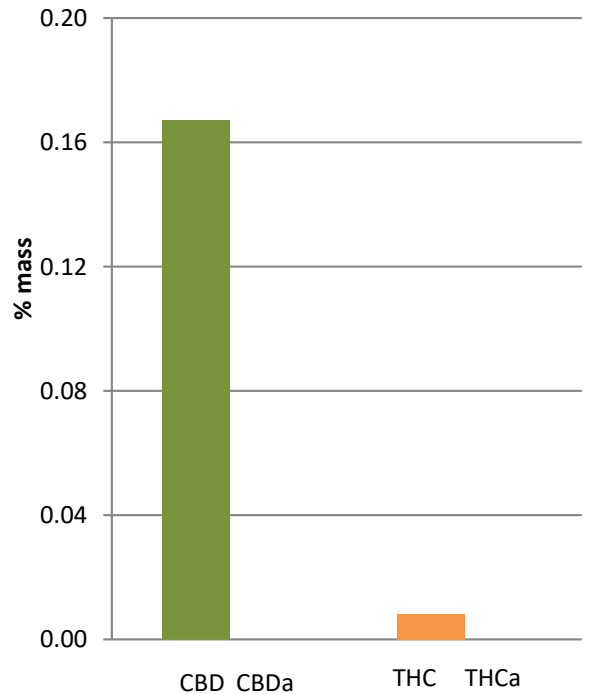
**sample mass:** 2.1772 g

**report date:** 04/16/2019

**product mass:** 62 g

## Cannabinoid Profile

Cannabinoid	% (w/w)	mg/g	Total mg
CBDV	n.q.	n.q.	1.86
THCV	n.q.	n.q.	0.62
CBD	0.17	1.67	103.54
CBG	n.d.	n.d.	0.00
CBDa	n.d.	n.d.	0.00
CBGa	n.d.	n.d.	0.00
CBN	n.q.	n.q.	1.24
$\Delta^9$ -THC	n.q.	n.q.	4.96
$\Delta^8$ -THC	n.d.	n.d.	0.00
CBC	n.q.	n.q.	1.86
THCa	n.d.	n.d.	0.00
<b>Total Cannabinoids</b>			<b>114.08</b>



n.d. = not detected

n.q. = detected trace amount, but not quantified (below limit of quantitation <0.1%)

<b>Raw THC Potency</b>	[THC] + [THC-A] =	<b>0.01%</b>
<b>Decarb THC Potency</b>	[THC] + [0.877xTHC-A] =	<b>0.01%</b>
<b>Raw CBD Potency</b>	[CBD] + [CBD-A] =	<b>0.17%</b>
<b>Decarb CBD Potency</b>	[CBD] + [0.877xCBD-A] =	<b>0.17%</b>

This report and all information herein shall not be reproduced except in its entirety without the written consent of Steep Hill DC. This report is for informational purposes only and should not be used to diagnose, treat or prevent any medical related symptoms. Results are applicable only for samples tested and for the specific tests conducted.